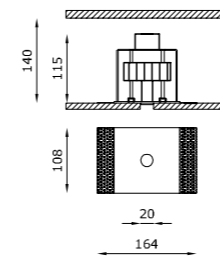
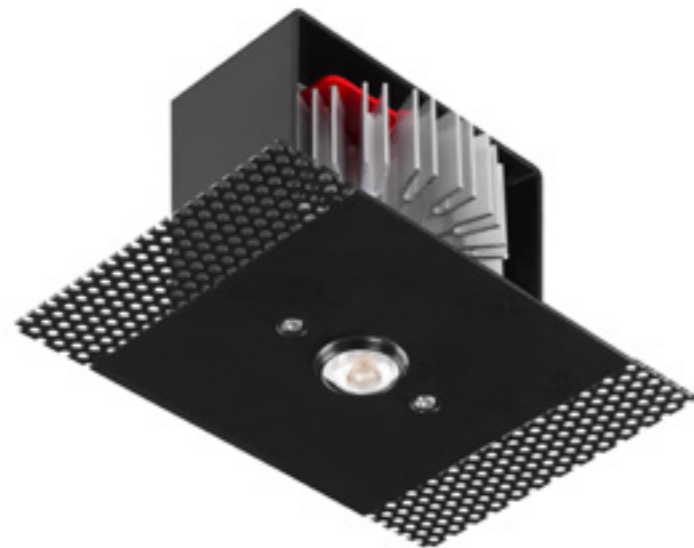
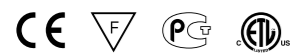


GENIUS NAKED



Genius Naked è un apparecchio a scomparsa totale a soffitto per ambienti interni che offre la possibilità di essere installato su superfici come vetro, legno, ferro, cemento, specchi o moduli industriali - fino ad uno spessore massimo di 2 cm. Un prodotto che si integra negli ambienti alla perfezione, in un gioco di superfici e design. Il foro di emissione della luce di soli 20 mm, in grado di generare un potente fascio luminoso, è dotato di meccanismo push-pull che facilita l'eventuale estrazione e sostituzione della sorgente LED in caso di manutenzione.

Genius Naked is a totally recessed ceiling device, ideal for indoor environments. This product can be installed on surfaces made of different materials, such as glass, wood, iron, cement or mirrors and industrial modules - up to no more than 2 cm. This luminaire perfectly blends in with the surrounding environment, in a game of surfaces and design. The light emission hole, only 20 mm wide, produces an intense light beam, and it works with a pull-push mechanism that simplifies the extraction and the replacement of the LED light during the maintenance.

CODE COMPOSITION

1061 BL 4 R 40 E _ WD

light colour

27	2700K
30	3000K
40	4000K

example of code composition 1061 BL 4 R 40 E **30** WD

TECHNICAL FEATURES

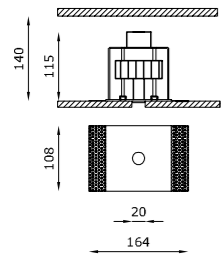
Code	1061
Type	Downlight 90° 
Material	Aluminum I Steel
Finishing	Black
Weight	0.65 Kg
Mounting	Ceiling recessed
IP rating	IP20
Insulation class	III
Control gear	Remote constant current electronic driver (not included)
Lamp type	LED 700 mA Vf: 11.5 VDC
Lamp wattage	1 x 8.5W
Luminous efficacy	130 lm/W - 3000K
Light distribution	Wide beam 40°
Fitting	-
Light colour	White 3000K White 2700K I 4000K (on request)
Light hole	Ø 20 mm
Voltage connection	by driver (optional)
CRI	>90
Emergency	On request
Energy efficiency class	A++
Note	On request available dimmable PUSH or DALI, remote installation.

Suitable for installation on surfaces max 20 mm deep.



OPTIONAL ACCESSORIES

product code	optional code	description	info
1061	H8700.A	Constant current electronic driver. Remote installation	Suitable for n°2 code 1061 - 700 mA 220-240V - 50/60Hz
	H8700.B	Constant current electronic driver. Remote installation	Suitable for n°1 code 1061 - 700 mA 110-240V - 50/60Hz



CODE COMPOSITION


1062 BL 4 R 40 E _ WD

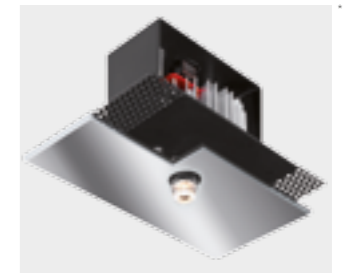
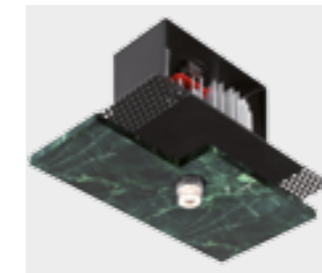
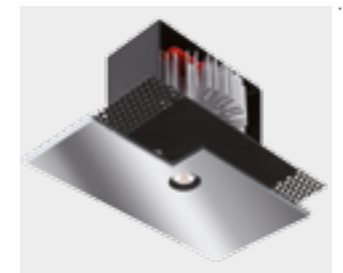
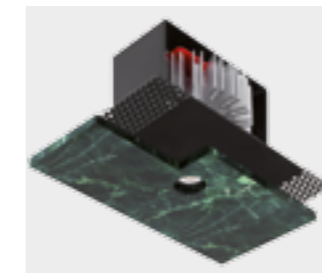
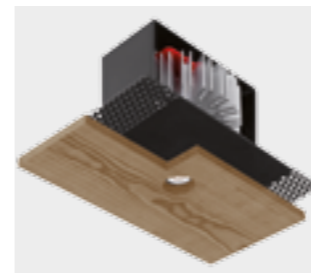
light colour

27	2700K
30	3000K
40	4000K

example of code composition 1062 BL 4 R 40 E 30 WD

TECHNICAL FEATURES

Code	1062
Type	Downlight 90° 
Material	Aluminum I Steel
Finishing	Black
Weight	0.65 Kg
Mounting	Ceiling recessed
IP rating	IP20
Insulation class	III
Control gear	Remote constant current electronic driver and inverter
Lamp type	LED 700 mA Vf: 11.5 VDC
Lamp wattage	1 x 8.5W
Luminous efficacy	130 lm/W - 3000K
Light distribution	Wide beam 40°
Fitting	-
Light colour	White 3000K White 2700K 4000K (on request)
Light hole	Ø 20 mm
Voltage connection	by driver
CRI	>90
Emergency	1 hour
Energy efficiency class	A++
Note	On request available dimmable PUSH or DALI, remote installation. Suitable for installation on surfaces max 20 mm deep.



* Examples of products installed on different types of surfaces, made of various materials (wood, marble and mirror)

** In case of maintenance, this is an example of the extraction of the LED module on Genius Naked