

HOMED

Just another WordPress site

HOME INTERIOR

Contemporary Renovation of Queen's Gate Place in London by Buzzi & Buzzi

Posted by [admin](#) on [March 18, 2016](#)

[0 Comments](#)



architects: Buzzi & Buzzi

Location: London, England

Year: 2016

Photo courtesy: Armani Casa

Description:

the design of the lighting, which defines the precise goal: to rehabilitate, thanks to the light, the Queen's gate Place, a well-known historic London building site in an upscale residential area of the city.



within a complex renovation project, which is the 2013 – 2014 saw the restoration of the entire building, Buzzi & Buzzi – the Lombard company's leadership in the lighting industry – recognized careful lighting study aims to enhance the detail of the original architectural structure. Without extol distortion renew preserving the beauty of the building and retaining the features: an extremely modern project, while fully respecting the precious original features – also revealed a painstaking work of composition and detail – the typical architectural style of the neighborhood where the building away.



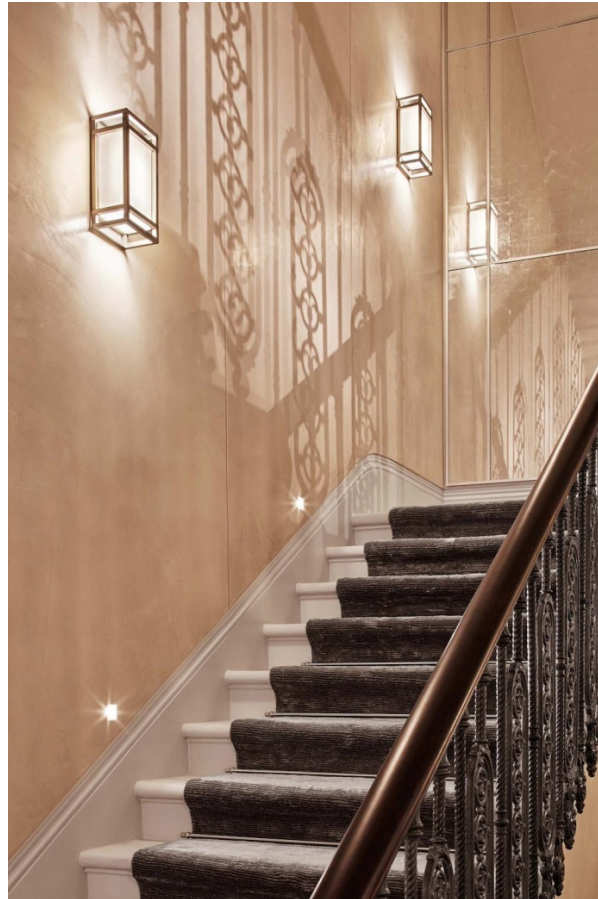
to bring new life to the details and the facade finish, highlighting the ancient beauty of Buzzi & Buzzi decided Minivirtus, a means to an outer wall, which was able, elegance and discretion, to beautify the architectural details emerged through restructuring. Minivirtus DurCoral® is made of a new material decorated with painting, with similar aesthetic characteristics of white cement, but technologically capable of producing light equipment outside. This is an aggregate, which allows very high performances in quality, flow, strength and finish; characterized by the ability to resist wear-resistant, insensitive to ultraviolet light, pollution and environmental influences.



The internal Buzzi & Buzzi has decided to use the ambient light, delicate and soft, able to convey emotions, create a unique atmosphere and at the same time that adequate lighting in the room.



residence, studies, cinema, cuisine, would bedrooms used Nephi and Jacobox, technical products recessed ceiling which, thanks to the material they are made, and the linear and clean design, which distinguishes them, then they are integrated perfectly matched surfaces, reaching an extraordinary result in the full light disappearance. The stands as the protagonist of the spaces, the furniture plays in the shadows and plasticity can give new meaning to objects.



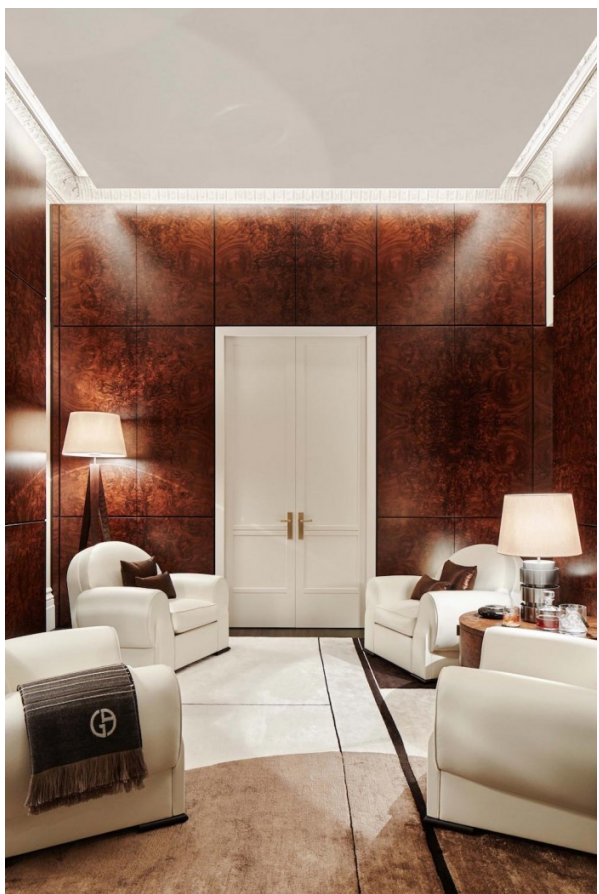
Bathroom and SPA, Buzzi & Buzzi chose Idrout: Fully recessed luminaire that in the right light and at the same time that are resistant to moisture present in these environments. Water Out® Idrout realized Coral, a substance that prevents water from entering the inside. The water-repellent effect remains constant over time, since it is not a surface but inherent Coral Water Out® same. The maintenance-free, Coral Water-proofing Out® adds durability, strength and beauty of the typical Coral®.



discreet and minimal, this product enhances the mood of the light, which is intimate and relaxing and offers incredible feelings of well-being.



Finally, the main staircase, Buzzi & Buzzi has created a Invisiled – Fully recessed luminaire – itinerary stunning photographs, a real light guide, the ability to reinvent the architecture, adding that the spatial quality.















Thank you for reading this article!

