



## buzzi & buzzi brings alessandro borghese's restaurant to light

[design](#)

[181 shares](#)

[connections: +3280](#)



### **BUZZI & BUZZI ILLUMINATES ALESSANDRO BORGHESE'S RESTAURANT**

Light where you least expect it: **lighting** company Buzzi & Buzzi illuminates the interiors of Alessandro Borghese's new **restaurant**, in Venice. Designed by architect Alfredo Canelli, 'AB – Il Lusso della Semplicità' became a source of inspiration for the leading Italian brand, who, together with furnishing experts Cierreesse, gave the 16<sup>th</sup> century building its contemporary finesse. With light hidden almost totally into the surfaces of walls or hanging from the ceiling, the fittings showcase the brand's versatility for expressive freedom.



Buzzi & Buzzi lights up Alessandro Borghese's restaurant in Venice  
photography by Michetta Creative  
all images courtesy of Buzzi & Buzzi

Elegance and performance live together in the projects of the technical-lighting Italian company as it puts itself at the service of architects and designers. Founded in 1990 in Pozzo d'Adda by Pietro Buzzi and Marialuise Chiari, Buzzi & Buzzi has consolidated its presence in Italy and abroad with a complete proposal for all sectors, meeting customers' demands with a wide range of lighting fixtures. Several collections, both for the indoors and out, distinguish the production of its renowned pieces. The Main Collection offers a very rich range of recessed, ceiling / wall, and pendant products, while the enhanced Iron Collection focuses on single, 48V (with miniaturized dimensions) or 220V track or stand-alone projectors with specifications suitable for both retail and domestic or small commercial use, offering versatility as well as adaptability to different contexts and designers.

Buzzi & Buzzi has also been included in the exhibitors for the Light + Building Autumn Edition 2022, the world's leading fair for lighting, electrical engineering, house and building automation. Held in Frankfurt am Main from 2 to 6 October 2022, the focus lies on intelligent and connected solutions, forward-looking technologies and current design trends. Amongst 1,500 participants, the Italian company marks its stance as a market leader.



the recessed light fittings discreetly hide among the architectural elements of the palazzo

## TECHNOLOGY, AESTHETICS & PERFORMANCE ELEVATE THE PALAZZO

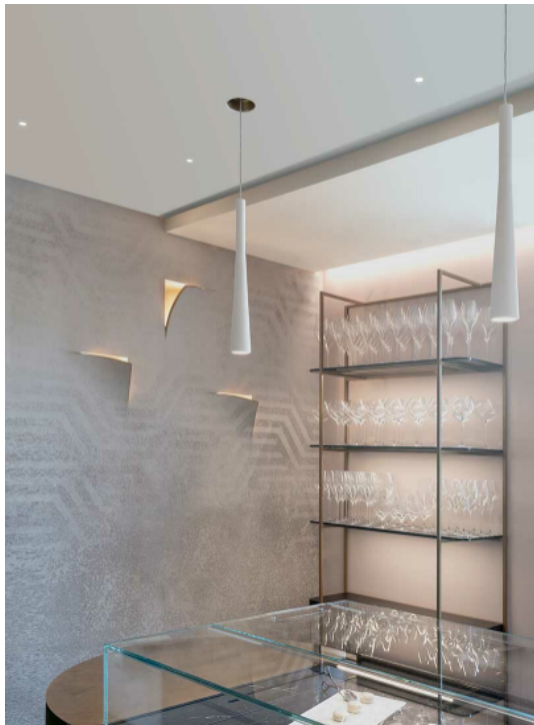
The company's compromise between high technology design, aesthetics and performance is manifested successfully in Alessandro Borghese's 'AB - Il Lusso della Semplicità', where NANO track-systems, performing light, and rich decorations create a synthesis that only complements further the cultural heritage of the Venetian palazzo. The Milanese restaurant that rises around the city's canals is designed by Architect Alfredo Canelli and furnished by Cierreesse, as Buzzi & Buzzi completes the project by bringing it to light.



the Funnel pendant lights above the bars do nothing to hide their iconic shape

Demonstrating the company's wide range of facets, the Funnel pendant lights do nothing to hide their distinctive shape. The direct light falls from the ceiling from a completely recessed housing to valorize the piano bar, while the white version, as seen above and below, generates a strong contrast with the gold of the walls and the green of the marble inserts. Highlighting contemporaneity, the product can be personalized in color and surface finish with any paint.

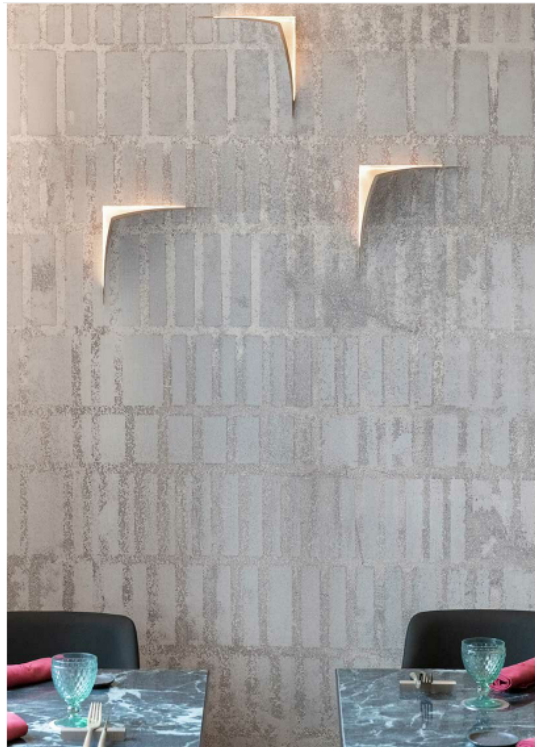
Moreover, for the bar counter, Buzzi & Buzzi has adopted the combination between the Genius recessed spotlights and the Funnel pendant lights. Genius is an incredibly powerful recessed spotlight in relation to the sizes of the emission hole, which is only as wide as 20 mm in diameter. The product, also present in the Twin Genius double version, adds a discreet and elegant integration into the architecture, almost disappearing into the surface.



the hanging Funnel pendants can be personalized in color and surface finish with any paint



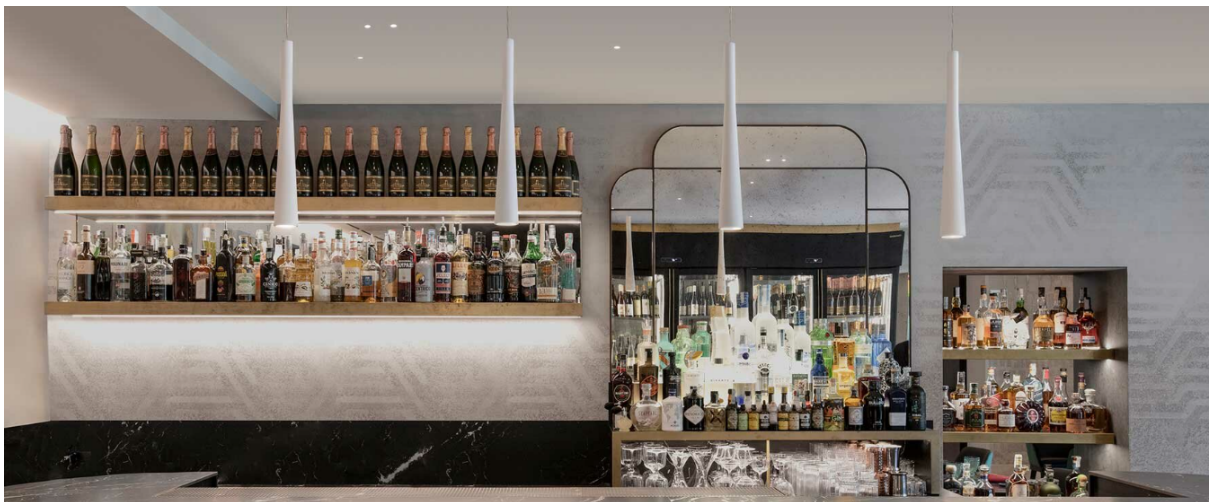
Leaf is the semi-recessed light fitting which emerges from the folds of wall paper with its characteristic clean cuts reminding the slashes of Argentinian-Italian painter Lucio Fontana. Specifically studied to become an integral part of walls or false ceilings, personalization possibilities go further than one would expect. As seen in the restaurant, the inner surfaces near the light source have been decorated with gold leaf: this not only gives a touch of sophistication, but it also recreates a soft and even warmer and more comfortable light.



Leaf is the semi-recessed light fitting which emerges from the wall surface in gold details for a warmer light

## THE LIGHTING PRODUCTS PURIFY AIR IN THE ROOM

What one doesn't see, but feels, is the impact the technical-lighting products have on the well-being of the diners. The Genius, Twin Genius, Leaf and Funnel products are made in AirCoral®. The material patented by the company can purify the surrounding air through a technology which reduces bacteria and pollutants.



the Genius, Twin Genius, Leaf and Funnel products are made in AirCoral®: a company patented material that purifies the room's air

The refined taste of the chef can be found in the spotlights of the Iron collection, designed to light specific elements in the architectural space with precision. X1 NANO 48V is the miniaturized track spotlight available in various finishes: white, black, anodized champagne or rose gold. In a minimal touch, the product occupies minimum space dimensionally (30mm diameter) and visually while giving high performances.



the refined taste of the chef can be seen in the X1 NANO 48V spotlights available in black, white, anodized champagne, or rose gold



the exterior of the palazzo

#### project info:

restaurant name: AB - Il Lusso della Semplicità / @ab\_illussodellasemplicita  
 chef: Alessandro Borghese  
 lighting: Buzzi & Buzzi / @buzziebuzzi  
 products featured: Funnel; Genius; Twin Genius; H2stop; L1; Leaf; Xi Nano 48V  
 furniture: Cierreesse  
 architectural design: Alfredo Canelli  
 location: Venice, Italy  
 photography: Michetta Creative

[eirini illa | designboom](#)

[oct 04, 2022](#)