



## buzzi & buzzi brings to light the alessandro borghese restaurant

Light where you least expect it: **lighting** the Buzzi & Buzzi company illuminates the interiors of the new by Alessandro Borghese **restaurant**, to Venice. Designed by the architect Alfredo Canelli, 'AB – The Luxury of Simplicity' has become a source of inspiration for the main Italian brand, which, together with the furniture experts Cierreesse, donated 16<sup>th</sup> century building its contemporary finesse. With the light almost totally hidden in the surfaces of the walls or hanging from the ceiling, the luminaires show the versatility of the brand for expressive freedom.

Elegance and performance coexist in the projects of **Italian technical-lighting company** because it is at the service of architects and designers. Founded in 1990 in Pozzo d'Adda by Pietro Buzzi and Marialuisa Chiari, Buzzi & Buzzi has consolidated its presence in Italy and abroad with a complete proposal for all sectors, satisfying customer requests with a wide range of bodies. illuminating. Various collections, both for interiors and exteriors, distinguish the production of his renowned pieces. The Main Collection offers a very rich range of recessed, ceiling / wall and pendant products, while the improved Iron Collection focuses on single, 48V (miniaturized dimensions) or 220V track or stand-alone projectors with specifications suitable for both retail and for home or small commercial use, offering versatility and adaptability to different contexts and designers.

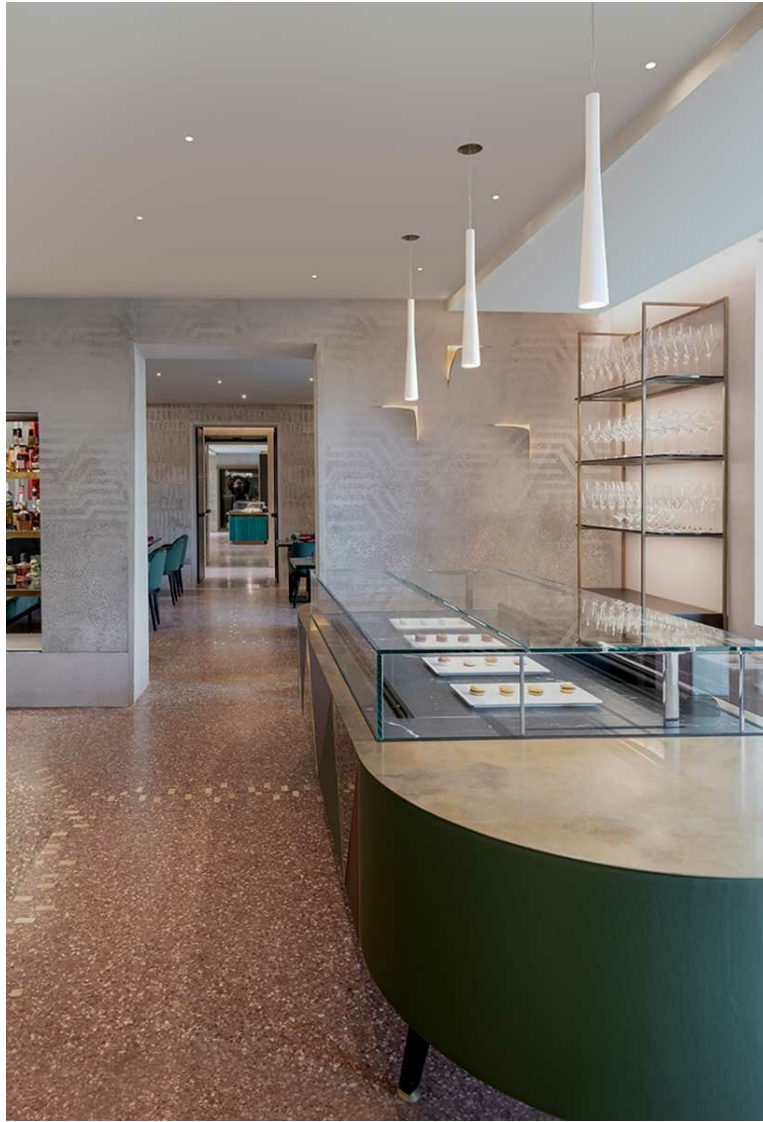
Buzzi & Buzzi was also included among the exhibitors for the **Light + Building Autumn 2022 Edition**, the world's leading trade fair for lighting, electrical, home and building automation. Held in Frankfurt am Main from 2 to 6 October 2022, the focus is on intelligent and connected solutions, forward-looking technologies and current design trends. Among 1,500 participants, the Italian company confirms itself as the market leader.



the recessed lighting bodies are discreetly hidden among the architectural elements of the building

## technology, aesthetics and performance elevate the building

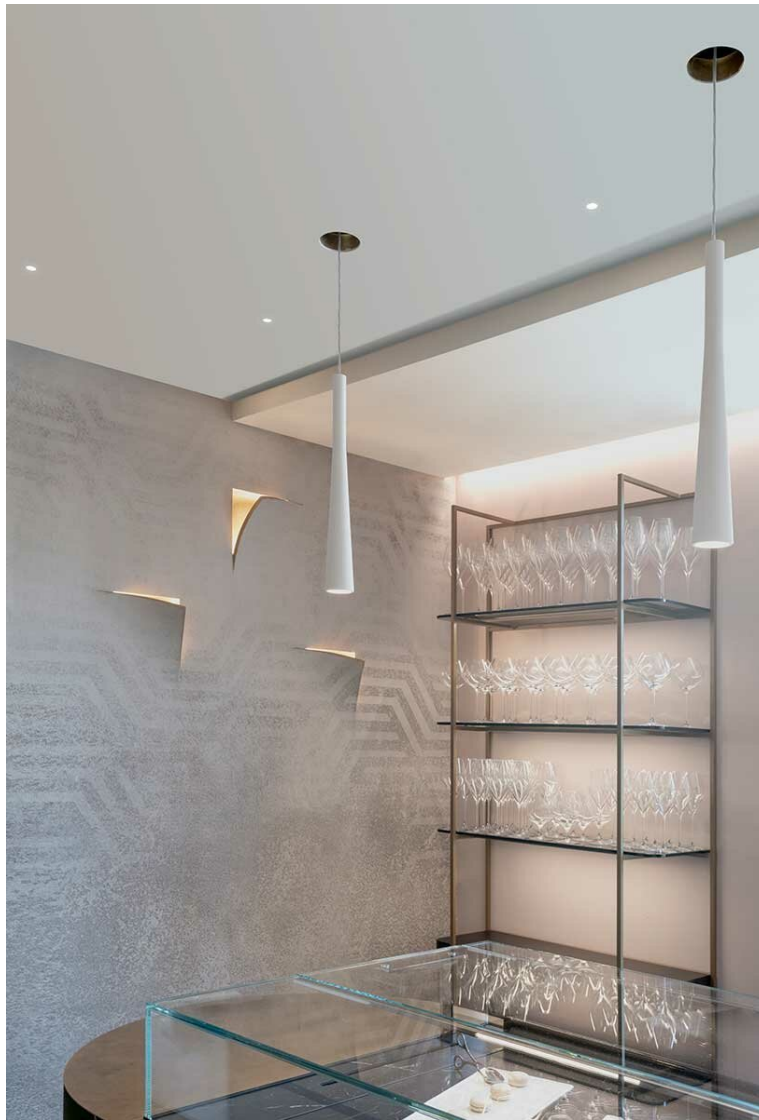
The company's compromise between high-tech design, aesthetics and performance is successfully manifested in the '**AB – The Luxury of Simplicity**', where the NANO tracks, the performing light and the rich decorations create a synthesis that further completes the cultural heritage of the Venetian palace. The Milanese restaurant that rises around the canals of the city is designed by the architect Alfredo Canelli and furnished by **Cierreseas**. Buzzi & Buzzi completes the project by bringing it to light.



the Funnel pendant lights above the bars do nothing to hide their iconic shape

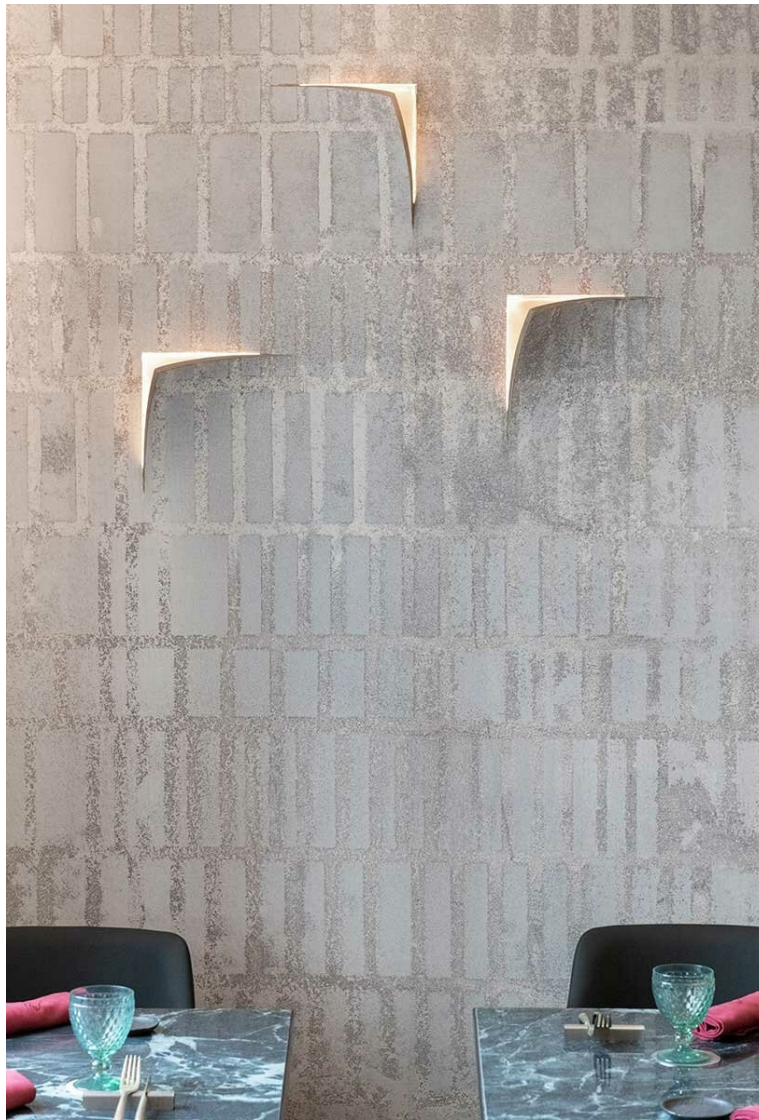
Demonstrating the company's wide range of facets, the **Funnel** pendant lamps do nothing to hide their distinctive shape. Direct light falls from the ceiling from a completely recessed housing to enhance the bar top, while the white version, seen above and below, generates a strong contrast with the gold of the walls and the green of the marble inserts. Highlighting the contemporaneity, the product can be customized in color and surface finish with any paint.

Furthermore, for the bar counter, Buzzi & Buzzi has adopted the combination between the **Genius** recessed spotlights and Funnel pendant lamps. Genius is an incredibly powerful recessed spotlight in relation to the size of the emission hole, which has a diameter of just 20 mm. The product, also present in the **Twin genius** double version, adds a discreet and elegant integration into the architecture, almost disappearing into the surface.



Funnel hanging pendants can be customized in color and surface finish with any paint

**Leaf** it is the semi-recessed that emerges from the folds of the wallpaper with its characteristic clean cuts that recall the cuts of the Italo-Argentine painter Lucio Fontana. Specifically designed to become an integral part of walls or false ceilings, the customization possibilities go beyond what one would expect. As seen in the restaurant, the internal surfaces near the light source have been decorated with gold leaf: this not only gives a touch of refinement, but also recreates a soft and even warmer and more comfortable light.



Leaf is the semi-recessed lamp that emerges from the surface of the wall with gold details for a warmer light

## lighting products purify the air in the room

What you don't see, but feel, is the impact that technical-lighting products have on the well-being of the diners. The Genius, Twin Genius, Leaf and Funnel products are made of AirCoral®. The company's patented material is able to purify the surrounding air through a technology that reduces bacteria and pollutants.

#buzzi #buzzi #brings #light #alessandro #borghese #restaurant