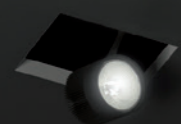
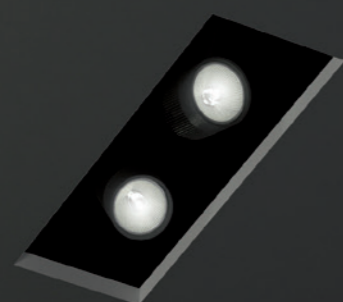
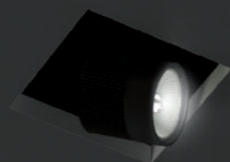


BULL



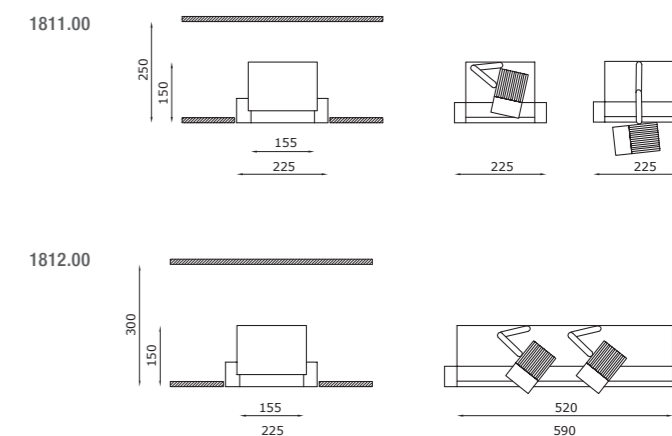
PROIETTORE ESTRAIBILE E ORIENTABILE
PULL-OUT AND SWIVELLING PROJECTOR



Bull



Indoor Recessed



TECHNICAL FEATURES

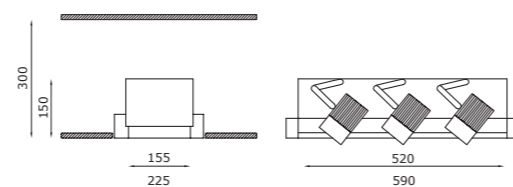
| | 1811.00 | 1812.00 |
|--------------------------|--|--|
| Code | 1811.00 | 1812.00 |
| Type | Tilttable downlight $\pm 360^\circ / \pm 90^\circ$ | Tilttable downlight $\pm 360^\circ / \pm 90^\circ$ |
| Material | 00: Coral® | 00: Coral® |
| Weight | 4,5 Kg | 7 Kg |
| Mounting | Ceiling recessed | Ceiling recessed |
| IP rating | IP40 | IP40 |
| Insulation class | III | III |
| Control gear | Remote constant current electronic driver (not included) | Remote constant current electronic driver (not included) |
| Cut out for plasterboard | 235 x 235 mm | 235 x 600 mm |
| Lamp type | LED 700 mA Vf: 37 VDC | LED 700 mA Vf: 2 x 37 VDC |
| Lamp wattage | 1 x 26W | 2 x 26W |
| Luminous efficacy | 1 x 3500 lm - 3000K | 2 x 3500 lm - 3000K |
| Light distribution | Beam 24° | Beam 24° |
| Fitting | - | - |
| Light colour | White 3000K | White 3000K |
| Light hole | 155 x 155 mm | 155 x 520 mm |
| Voltage connection | By driver (optional) | By driver (optional) |
| CRI | >90 | >90 |
| Emergency | - | - |
| Energy efficiency class | A++ | A++ |
| Note | Other available light colours: 2700K (on request), 4000K (on request). Other available beams: 38° (on request). | Other available light colours: 2700K (on request), 4000K (on request). Other available beams: 38° (on request). |

OPTIONAL



| | | |
|-------------------------------------|-----------------|-----------------|
| ON/OFF driver | cod. H8730 | cod. H8730 |
| PUSH/1-10V/DALI dimmable LED driver | cod. DRV0000094 | cod. DRV0000094 |

For further info and other available drivers please see page 474

1813.00



TECHNICAL FEATURES

| | |
|--------------------------|---|
| Code | 1813.00 |
| Type | Tilttable downlight $\pm 360^\circ / \pm 90^\circ$ |
| |   |
| Material | 00: Coral® |
| Weight | 10 Kg |
| Mounting | Ceiling recessed |
| IP rating | IP40 |
| Insulation class | III |
| Control gear | Remote constant current electronic driver (not included) |
| Cut out for plasterboard | 235 x 600 mm |
| Lamp type | LED 700 mA Vf: 3 x 37 VDC |
| Lamp wattage | 3 x 26W |
| Luminous efficacy | 3 x 3500 lm - 3000K |
| Light distribution | Beam 24° |
| Fitting | - |
| Light colour | White 3000K |
| Light hole | 155 x 520 mm |
| Voltage connection | By driver (optional) |
| CRI | >90 |
| Emergency | - |
| Energy efficiency class | A++ |
| Note | Other available light colours: 2700K (on request), 4000K (on request). Other available beams: 38° (on request). |

OPTIONAL

| | | |
|-------------------------------------|-----------------|-----------------|
| ON/OFF driver | cod. H8730 | cod. H8730 |
| PUSH/1-10V/DALI dimmable LED driver | cod. DRV0000094 | cod. DRV0000094 |

For further info and other available drivers please see page 474



Oriana Beauty Salon e Spa, Jeddah | SUPERFUTUREDESIGN*