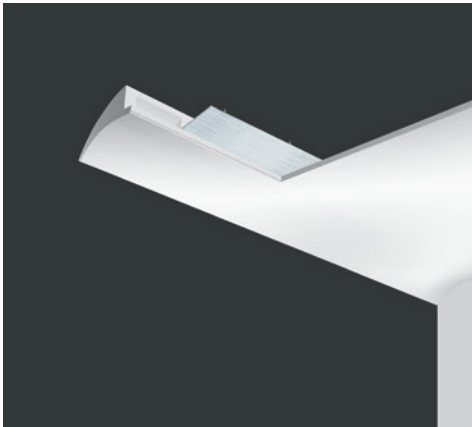


END



End

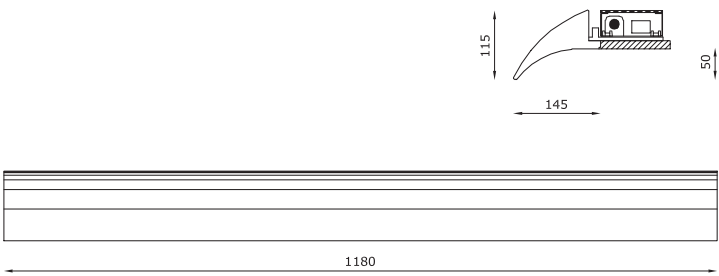


TECHNICAL FEATURES | LIGHT SOURCE

Code	8219
Type	Downlight 90° Wall recessed 90°
Material	-
Absorption capacity*	-
Weight	-
Mounting	-
IP rating	IP40
Insulation class	III
Control gear	Constant voltage driver (included)
Cut out for plasterboard	-
Lamp type	LED 24V
Lamp wattage	1 × 28W
Luminous efficacy	1 × 2800 lm - 3000K
Light distribution	Wide beam 120°
Fitting	-
Light colour	White 3000K
Light hole	-
Voltage connection	220-240V / 24V · 50/60Hz
CRI	>90
Emergency	-
Energy efficiency class	A++
Note	Other available light colours: 2700K (on request).

GOLA LUMINOSA CONTINUA E INDIRETTA
A SEMINCASSO

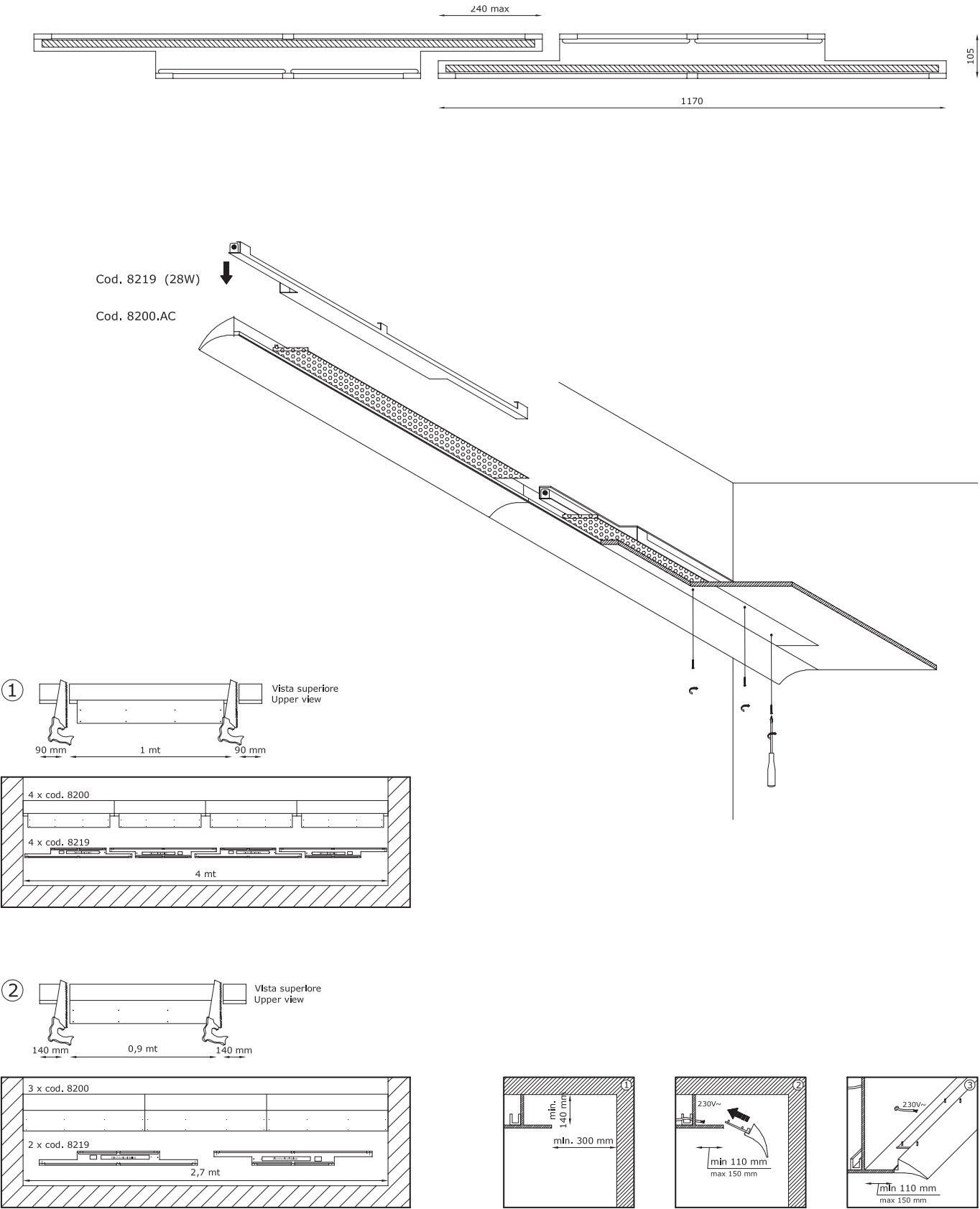
CONTINUOUS AND INDIRECT
SEMI-RECESSED LIGHT GROOVE



TECHNICAL FEATURES | BODYFRAME

Code	8200.AC
Type	-
Material	AC: AirCoral®
Absorption capacity*	22.5 m²
Weight	6 Kg
Mounting	Ceiling and wall half recessed
IP rating	-
Insulation class	-
Control gear	-
Cut out for plasterboard	1180 mm for each module installed
Lamp type	-
Lamp wattage	-
Luminous efficacy	-
Light distribution	-
Fitting	-
Light colour	-
Light hole	-
Voltage connection	-
CRI	-
Emergency	-
Energy efficiency class	-
Note	-

EXAMPLES OF INSTALLATION



* The absorption capacity per m² calculated by the American organization TCNA (Tile Council of North America) is measured for an average room of 2.7 m in height and therefore expressed in m²