

GAP



PROFILO PER GOLA LUMINOSA
A LUCE INDIRETTA
PROFILE FOR INDIRECT LIGHT GROOVE



Gap



OTHER AVAILABLE CODES

8108.27	<i>lens</i>	120°
	<i>light colour</i>	2700K

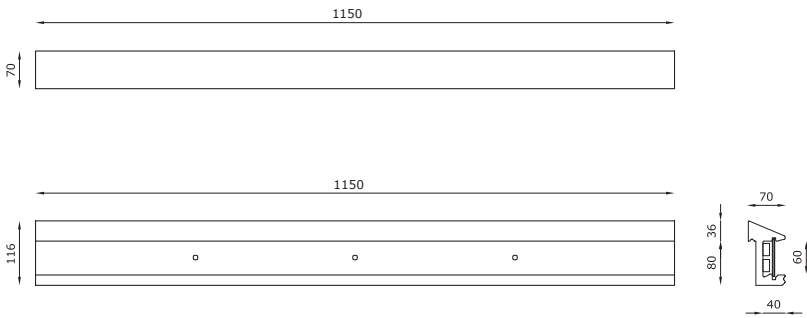
TECHNICAL FEATURES | LIGHT SOURCE

Code	8108
Type	Downlight 90° Wall recessed 90°
Material	-
Absorption capacity*	-
Weight	-
Mounting	-
IP rating	IP40
Insulation class	III
Control gear	Constant voltage driver (not included)
Cut out for plasterboard	-
Lamp type	LED 24V (900 mm)
Lamp wattage	1 × 21W
Luminous efficacy	1 × 2100 lm - 3000K
Light distribution	Wide beam 120°
Fitting	-
Light colour	White 3000K
Light hole	-
Voltage connection	By driver (optional)
CRI	>90
Emergency	-
Energy efficiency class	A++
Note	Other available light colours: 2700K.

OPTIONAL

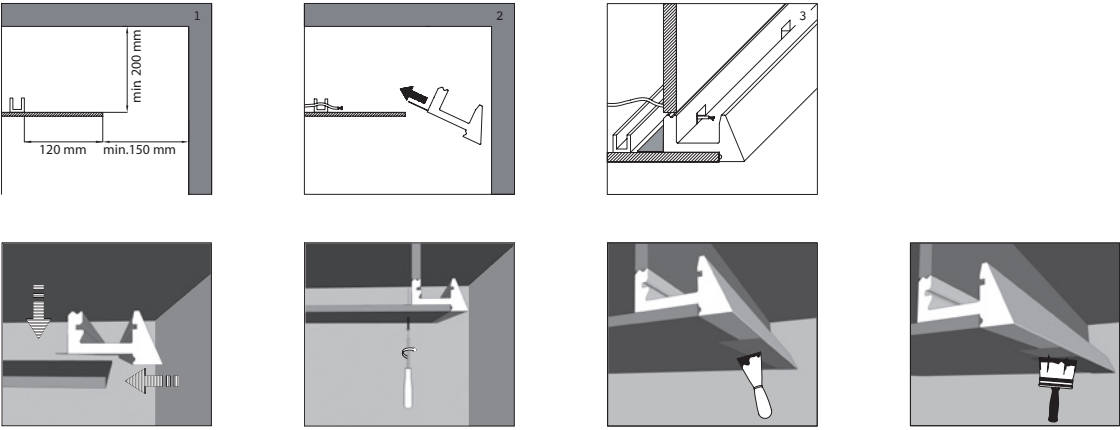
ON/OFF driver	cod. H8024.25
---------------	---------------

For further info and other available drivers please see page 474



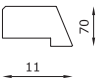
TECHNICAL FEATURES | BODYFRAME

Code	8300.AC	8310.AC
Type	-	Wall recessed 90°
Material	AC: AirCoral®	AC: AirCoral®
Absorption capacity*	19.22 m²	19.22 m²
Weight	2.5 Kg	2.5 Kg
Mounting	Ceiling recessed	Wall recessed
IP rating	-	-
Insulation class	-	-
Control gear	-	-
Cut out for plasterboard	1150 mm for each module installed	1150 mm for each module installed
Lamp type	-	-
Lamp wattage	-	-
Luminous efficacy	-	-
Light distribution	-	-
Fitting	-	-
Light colour	-	-
Light hole	-	-
Voltage connection	-	-
CRI	-	-
Emergency	-	-
Energy efficiency class	-	-
Note	-	-



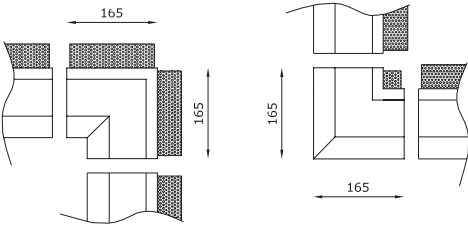
TECHNICAL FEATURES | CLOSURE HEADPARTS

Code	8350.AC
Material	AC: AirCoral®
Absorption capacity*	0.9 m²
Weight	-
Mounting	Wall and ceiling recessed
IP rating	-
Cut out for plasterboard	-
Note	-



TECHNICAL FEATURES | ANGLE

Code	8330.AC	8340.AC
Material	AC: AirCoral®	AC: AirCoral®
Absorption capacity*	5 m²	5 m²
Weight	1.3 Kg	1.3 Kg
Mounting	-	-
IP rating	-	-
Cut out for plasterboard	-	-
Note	Internal angle	External angle



8330.AC

8340.AC

TECHNICAL FEATURES | PROTECTION SHIELD

Code	8320
Material	Satin polycarbonate
Dimensions	-
Note	-

* The absorption capacity per m² calculated by the American organization TCNA (Tile Council of North America) is measured for an average room of 2.7 m in height and therefore expressed in m²