

# LINEA 5

CORNICE PERIMETRALE A PARETE MODULABILE  
E TAGLIABILE A MISURA

MODULAR, CUT-TO-SIZE  
WALL PERIMETER FRAME

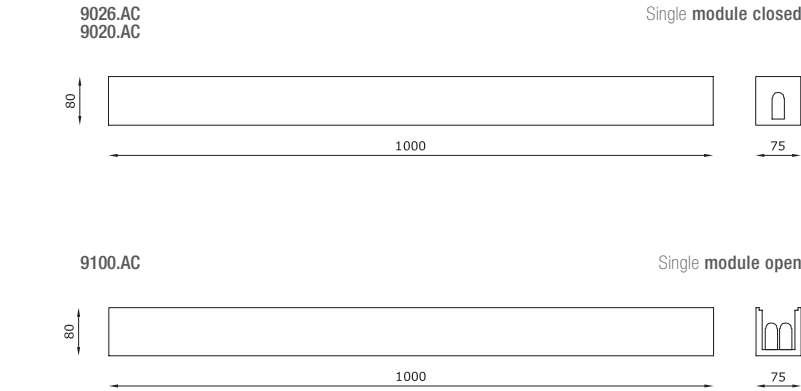


## Linea 5



### OTHER AVAILABLE CODES

9026.27.AC	<i>lens</i>	120°
	<i>light colour</i>	2700K



### TECHNICAL FEATURES

Code	9026.AC	9100.AC	9020.AC	8108
Type	Wall lamp	Wall lamp	Wall lamp	-
				-
Material	AC: AirCoral®	AC: AirCoral®	AC: AirCoral®	-
Absorption capacity*	17.28 m²	17.28 m²	17.28 m²	-
Mounting	Wall mounting	Wall mounting	Wall mounting	-
IP rating	IP40	-	-	IP40
Insulation class	III	-	-	III
Control gear	Constant voltage LED driver (not included)	-	-	-
Lamp type	LED 24V	-	-	LED 24V (900 mm)
Lamp wattage	1 × 21W	-	-	1 × 21W
Luminous efficacy	1 × 2100 lm - 3000K	-	-	1 × 2100 lm - 3000K
Light distribution	-	-	-	-
Fitting	-	-	-	-
Light colour	White 3000K	-	-	White 3000K
Voltage connection	220-240V - 50/60Hz	-	-	220-240V - 50/60Hz
CRI	-	-	-	-
Emergency	-	-	-	-
Energy efficiency class	A++	-	-	A++
Note	Single module <b>closed and connected.</b>  Lamp included.  Other available light colours: 2700K, 4000K (on request).	Single module <b>open</b> and empty.  Lamp not included.	Single module <b>closed</b> and empty.  Lamp not included.	<b>Light source</b> without bodyframe.  Other available light colours: 2700K, 4000K (on request).

### OPTIONAL

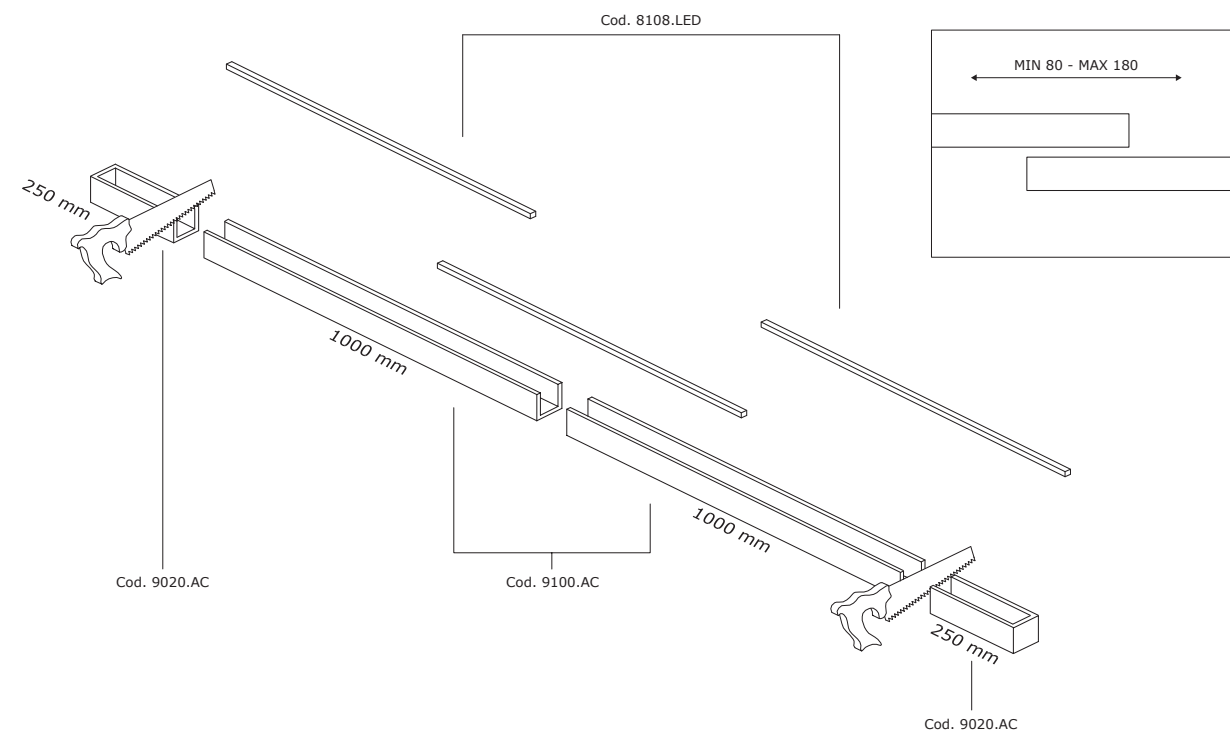
ON/OFF driver	cod. H8024.25	-	-	cod. H8024.25
Polycarbonate safety screen	cod. 9031	cod. 9030	cod. 9031	-

For further info and other available drivers please see page 474

\* The absorption capacity per m² calculated by the American organization TCNA (Tile Council of North America) is measured for an average room of 2.7 m in height and therefore expressed in m²

EXAMPLE OF INSTALLATION

**Note** Attention, for creating luminous continuity without shadow cones it is recommended to place on the electrical parts from a minimum of 80 mm to a maximum of 180 mm

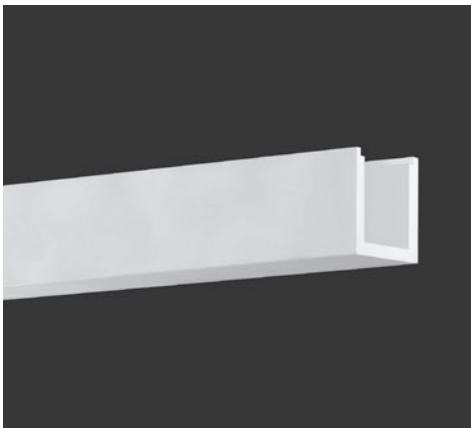


Example of application in continuous line with module LINEA 5 for 2500 mm:

- 2 pcs of empty modules code 9100.AC length 1000 mm each
- 2 pcs of lateral closing parts length 250 mm each; derives cutting the desired length of the module code 9020.AC (see drawing)



lateral closing parts code 9026.AC / 9020.AC



empty modules code 9100.AC

