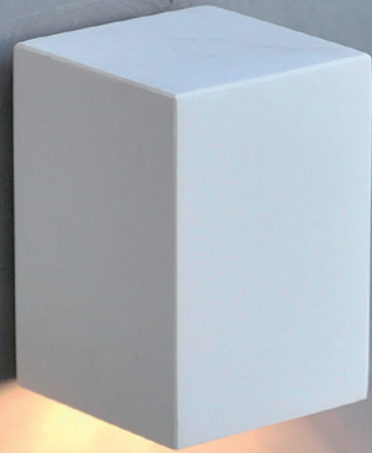
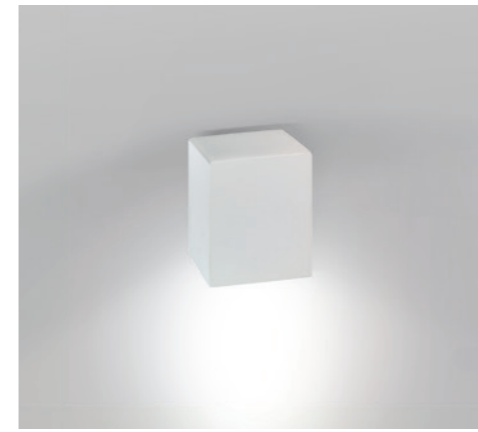


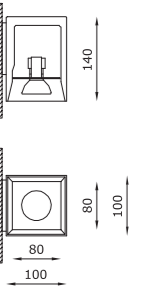
VERSUS



LAMPADA A PARETE, INSTALLABILE
SIA A LUCE DIRETTA CHE INDIRETTA
WALL LAMP, INSTALLABLE
WITH BOTH DIRECT AND INDIRECT LIGHT



Versus



TECHNICAL FEATURES

	2191.AC	2192.AC
Code	2191.AC	2192.AC
Type	Wall lamp	Wall lamp
Material	AC: AirCoral®	AC: AirCoral®
Absorption capacity*	4.21 m²	4.21 m²
Mounting	Wall mounting	Wall mounting
IP rating	IP20	IP20
Insulation class	I	I
Control gear	-	-
Lamp type	QPAR 16	QPAR 16
Lamp wattage	1 × 50W max	1 × 50W max
Luminous efficacy	-	-
Light distribution	-	-
Fitting	GU10	GU10
Light colour	-	-
Voltage connection	220-240V · 50/60Hz	220-240V · 50/60Hz
CRI	-	-
Emergency	-	-
Energy efficiency class	A	A
Note	Installation for direct light.	Installation for indirect light.

OPTIONAL

Kit LED dimmable	cod. 0009KIT	cod. 0009KIT
------------------	--------------	--------------

For further info and other available drivers please see page 474