

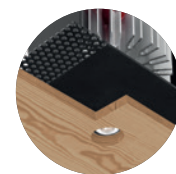
GENIUS NAKED IP65

1000 lm DA UN FORO 20MM DI DIAMETRO
INCASSO IP65 SENZA CORNICE
ED ISPEZIONABILE

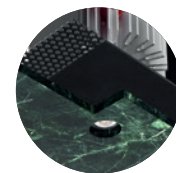
1000 lm FROM A 20 mm DIAMETER HOLE
RECESSED FIXTURE WITH IP65 PROTECTION
FRAMELESS AND INSPECTABLE

SCOMPARSATA TOTALE
CON QUALSIASI MATERIALE

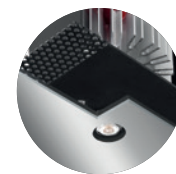
TOTALLY CONCEALED INSTALLATION
WITH ANY MATERIAL



wood



marble



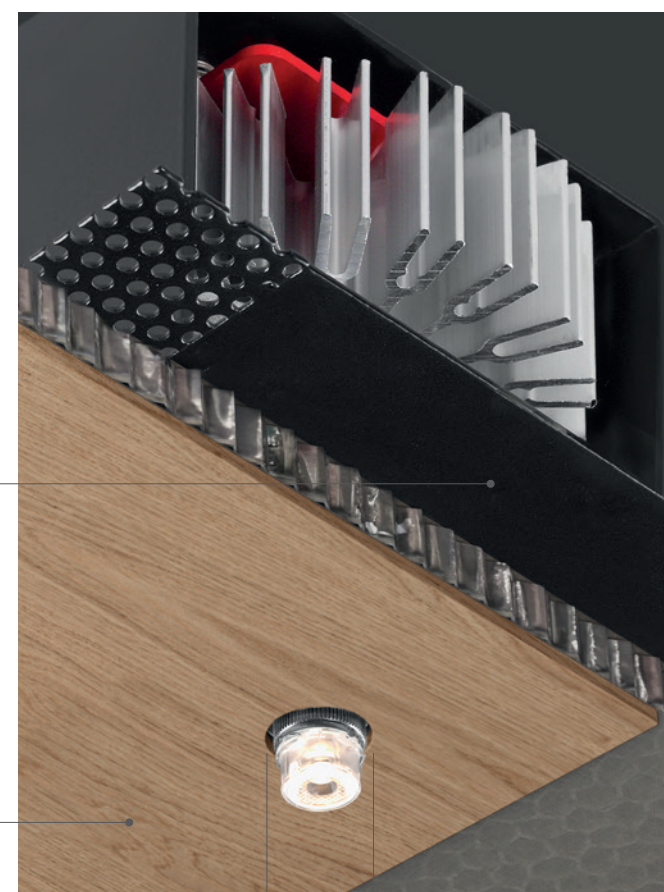
mirror

il corpo illuminante viene
pre-montato sul pannello
di rivestimento

*the lighting body
is pre-mounted on the
cladding panel*

installabile su materiali con
spessore da 5 a 20 mm

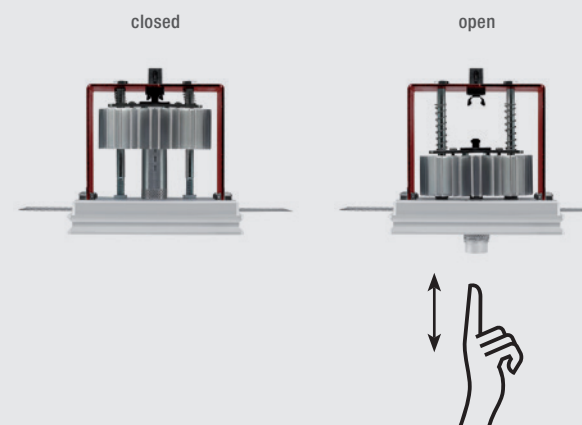
*it can be installed on
materials with a thickness
from 5 mm (0.2")
to 20 mm (0.79")*



20 mm

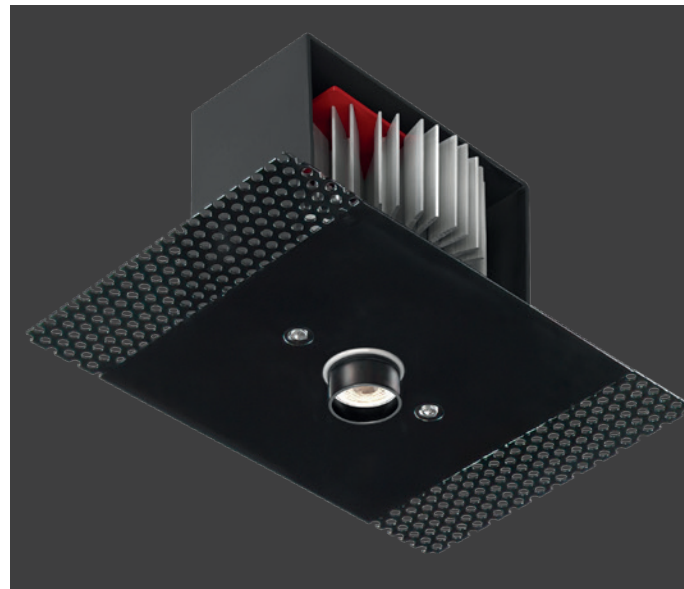
l'unica parte visibile è il foro di soli 20 mm
the only visible part is the emission hole of 20 mm (0.79")

PUSH & PULL TECHNOLOGY



Non necessita di alcuna botola di ispezione. La parte elettrica è estraibile direttamente dal foro luce con un semplice gesto della mano, grazie alla meccanica push-pull, che facilita l'eventuale estrazione e la sostituzione della sorgente LED in caso di manutenzione.

No need for an inspection hatch. The electrical part can be extracted straight from the light hole just with a simple manual gesture, thanks to the push-pull mechanism which makes it easy to extract and replace the LED source for maintenance purposes.

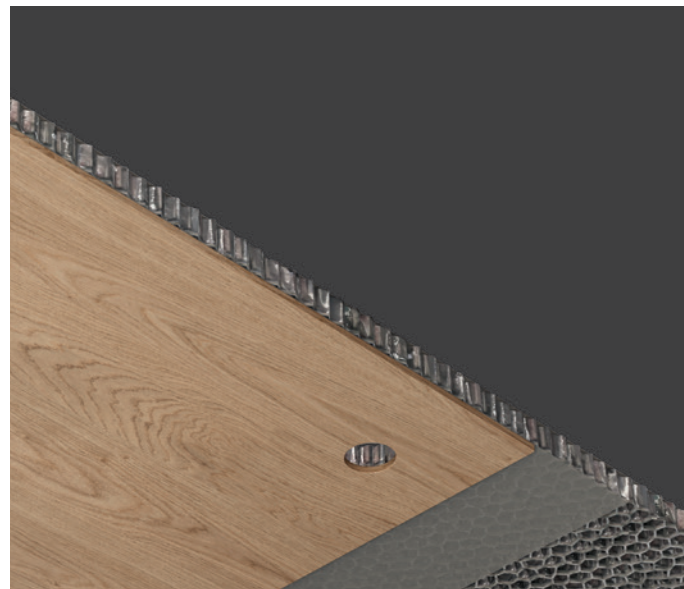


GENIUS NAKED IP65 ADATTO PER QUALSIASI SUPPORTO E MATERIALE

GENIUS NAKED IP65 SUITABLE FOR ANY SURFACE AND MATERIAL

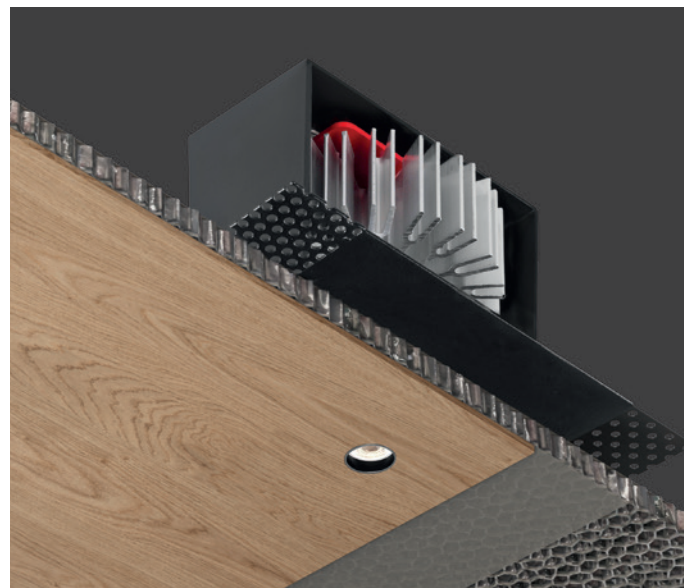
Genius Naked IP65 è l'evoluzione della famiglia Genius, che estende il concetto di totale integrazione superficiale a qualsiasi materiale e contesto.

Genius Naked IP65 is the evolution of the Genius family, extending the total surface integration concept to any material and context.



È un apparecchio a scomparsa totale, per installazione a soffitto in ambienti interni, che può essere installato su qualsiasi superficie: legno, cemento, specchio, marmo, moduli industriali con uno spessore da 5 mm a massimo 20 mm.

It is a totally recessed luminaire, for ceiling-mounted indoor installation, which can be installed on any surface: wood, cement, mirror, marble, industrial modules with a thickness from 5 mm (0.2") to a maximum of 20 mm (0.79").

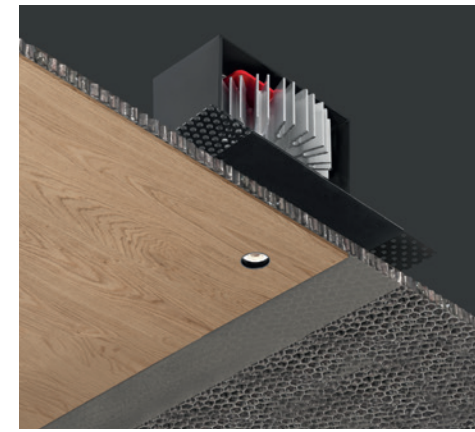


Unica parte visibile è il foro di soli 20 mm, in grado di generare un potente fascio luminoso.

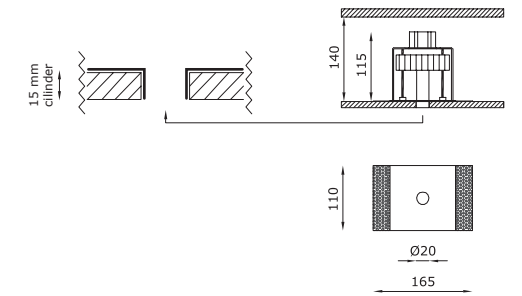
Infatti la variante "Naked" mantiene tutte le prestazioni del Genius, con la parte elettrica estraibile direttamente dal foro luce, grazie alla meccanica push-pull, che facilita l'estrazione e la sostituzione della sorgente LED, senza la necessità di alcuna botola di ispezione e tantomeno di interventi invasivi in caso di manutenzione.

The only visible part is the light emission hole of only 20 mm (0.79"), capable of generating a powerful light beam.

In fact, the "Naked" version retains all the performances of the Genius, with the electrical part which can be removed through the light hole, thanks to a push-pull mechanism making it easy to pull the LED light source out and replace it, with no need for any inspection hatch, nor for invasive maintenance operations.



Genius Naked IP65



OTHER AVAILABLE CODES

2075 BL 4 R _ E _ WD	
<i>light colour</i>	
27	2700K
30	3000K
40	4000K (on request)
<i>lens</i>	
24	24°
40	40°

2076 BL 4 R _ E _ WD	
<i>light colour</i>	
27	2700K
30	3000K
40	4000K (on request)
<i>lens</i>	
24	24°
40	40°

example of code composition 2075 BL 4 R 40 E 30 WD



GENIUS NAKED see page 132

TECHNICAL FEATURES

Code	2075 XX	2076 XX emergency
Type	Downlight 90°	Downlight 90°
Material	Aluminum I Steel	Aluminum I Steel
Weight	Black	Black
Mounting	0.65 Kg	0.65 Kg
IP rating	Ceiling recessed	Ceiling recessed
Insulation class	IP65	IP65
Control gear	III	III
Cut out for plasterboard	Remote constant current electronic driver (not included)	Remote constant current electronic driver (not included), inverter (included)
Lamp type	LED 700 mA Vi: 11.5 VDC	LED 700 mA
Lamp wattage	1 x 8.5W	1 x 8.5W
Luminous efficacy	1 x 1000 lm - 3000K	1 x 1000 lm - 3000K
Light distribution	Beam 24° I 40°	Beam 24° I 40°
Fitting	-	-
Light colour	White 3000K White 2700K I 4000K (on request)	White 3000K White 2700K I 4000K (on request)
Light hole	Ø 20 mm	Ø 20 mm
Voltage connection	By driver (optional)	220-240V - 50/60Hz
CRI	>90	>90
Emergency	-	1 hour
Energy efficiency class	A++	A++
Note	Suitable for installation on surfaces max 20 mm deep.	Suitable for installation on surfaces max 20 mm deep.

OPTIONAL

ON/OFF driver	cod. H8700.E	cod. H8700.E
Trailing and leading edge driver	cod. DRV0000129	cod. DRV0000129
DALI dimmable LED driver	cod. DRV0000030	cod. DRV0000030
PUSH dimmable LED driver	cod. DRV0000027	cod. DRV0000027
PUSH/1-10V/DALI dimmable LED driver	cod. DRV0000094	cod. DRV0000094

For further info and other available drivers please see page 474