

# CLASS

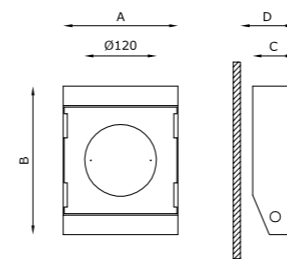


## INCASSO A PARETE E SOFFITTO CON VETRO A FILO.

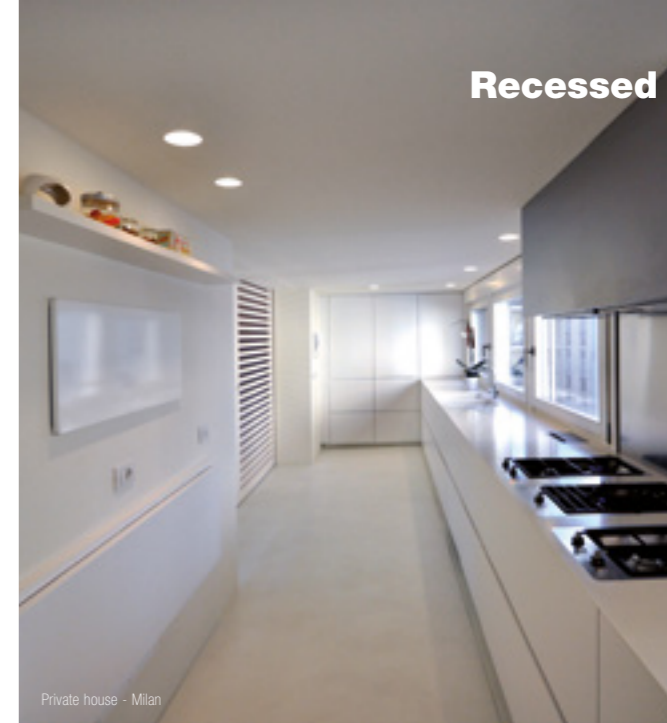
La tecnologia sposa l'eleganza per dare vita a un prodotto dal design pulito e minimale: il corpo in AirCoral® dell'apparecchio, un incasso a scomparsa totale da interni adatto per installazione in parete e soffitto di cartongesso o laterizio, è completamente invisibile. La presenza del vetro satinato, fissato con viti in policarbonato bianche e completamente a filo con il corpo, genera un cono di luce puro e dal volume netto, che avvolge le superfici sottostanti, interrompendo l'oscurità.

## WALL OR CEILING RECESSED FITTING WITH FLUSH GLASS.

Technology combines with elegance to give life to a product with a clean and minimal design: the AirCoral® body of this luminaire, a totally disappearing, indoor, recessed, installable on plasterboard or brick walls and ceilings, is completely invisible. The satin glass, fixed with white polycarbonate screws perfectly positioned at the level of the body, creates a pure cone of light with a neat volume which embraces the surfaces below, breaking into darkness.



Recessed



Private house - Milan

## TECHNICAL FEATURES

Code	6191.AC	6192.AC	6193.Z.AC	6199.Z.AC
Type	Downlight 45°   Wall recessed 45° ▲▲▲	Downlight 90°   Wall recessed 90° ▲▲	Downlight 90°   Wall recessed 90° ▲▲	Downlight 90°   Wall recessed 90° ▲▲
Material	AC: AirCoral®	AC: AirCoral®	AC: AirCoral®	AC: AirCoral®
Absorption capacity*	1.88 m²	1.88 m²	1.88 m²	1.88 m²
Weight	1.5 Kg	1.5 Kg	1.5 Kg	2.5 Kg
Mounting	Wall and ceiling recessed	Wall and ceiling recessed	Wall and ceiling recessed	Wall and ceiling recessed
IP rating	IP40	IP40	IP40	IP40
Insulation class	III	III	III	III
Control gear	Dimmable electronic transformer	Dimmable electronic transformer	Constant current electronic driver	Constant current electronic driver
Dimensions	A: 190mm; B: 245mm; C: 70mm; D: 80mm	A: 190mm; B: 245mm; C: 70mm; D: 80mm	A: 190mm; B: 245mm; C: 70mm; D: 80mm	A: 190mm; B: 350mm; C: 70mm; D: 80mm
Cut out for plasterboard	195 x 185 mm	195 x 185 mm	195 x 185 mm	195 x 250 mm
Lamp type	QR CB 51 ☞	QR CB 51 ☞	LED 500 mA ☞	LED 500 mA ☞
Lamp wattage	1 x 50W max	1 x 50W max	1 x 9W	1 x 9W
Luminous efficacy	-	-	1125 lm - 3000K	1125 lm - 3000K
Light distribution	-	-	Wide beam 40°	Wide beam 40°
Fitting	GU5.3	GU5.3	-	-
Light colour	-	-	White 3000K White 2700K   4000K (on request)	White 3000K White 2700K   4000K (on request)
Light hole	Ø 120 mm	Ø 120 mm	Ø 120 mm	Ø 120 mm
Voltage connection	220-240V / 12V · 50/60Hz	220-240V / 12V · 50/60Hz	220-240V · 50/60Hz	220-240V · 50/60Hz
CRI	-	-	>90	>90
Emergency	-	-	-	1 hour
Energy efficiency class	A	A	A++	A++
Note	Extra white satin glass fixed by screws on wall/ceiling level.	Extra white satin glass fixed by screws on wall/ceiling level.	Extra white satin glass fixed by screws on wall/ceiling level. On request available dimmable PUSH or DALI.	Extra white satin glass fixed by screws on wall/ceiling level.

## OPTIONAL ACCESSORIES

product code	optional code	description	info
6191.AC / 6192.AC	0008KIT	Kit LED dimmable	Bulb 7W - 12V

\* The absorption capacity per m² calculated by the American organization TCNA (Tile Council of North America) is measured for an average room of 2.7 m in height and therefore expressed in m²